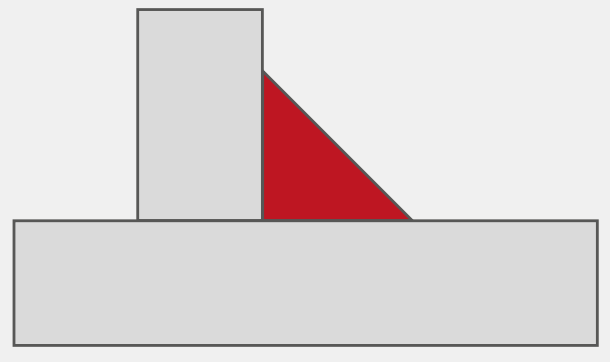




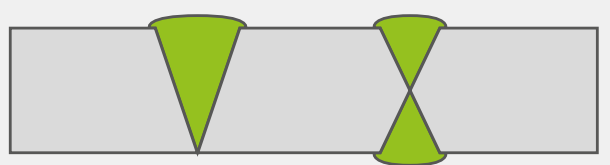
# The suitable welding shoe for every application

## WELDPLAST S2 PVC/S4/S6

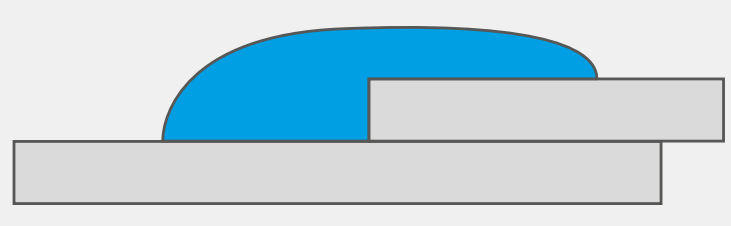
### Seam geometries



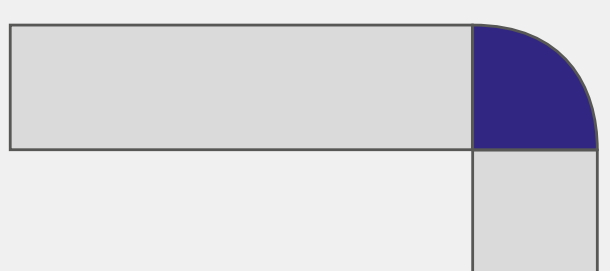
Fillet weld seam



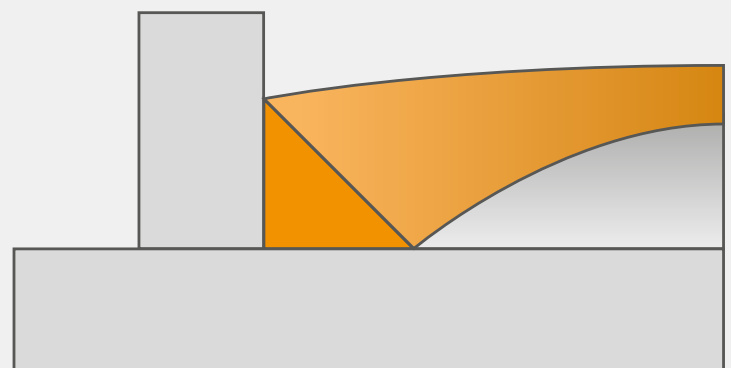
V-seam / X-seam



Overlap seam



Corner outside seam



Corner seam



**WELDPLAST S2 PVC**



**WELDPLAST S4**



**WELDPLAST S6**

**Leister External Air System (EA)**  
(EA: External air system)

**Naming on the basis of ex K-5/6 EA:**  
K: Shape of seam | 5/6: Material thickness | EA: External air system



**K-5/6 EA**  
Fillet weld, 5/6 mm  
Article No.: 146.235



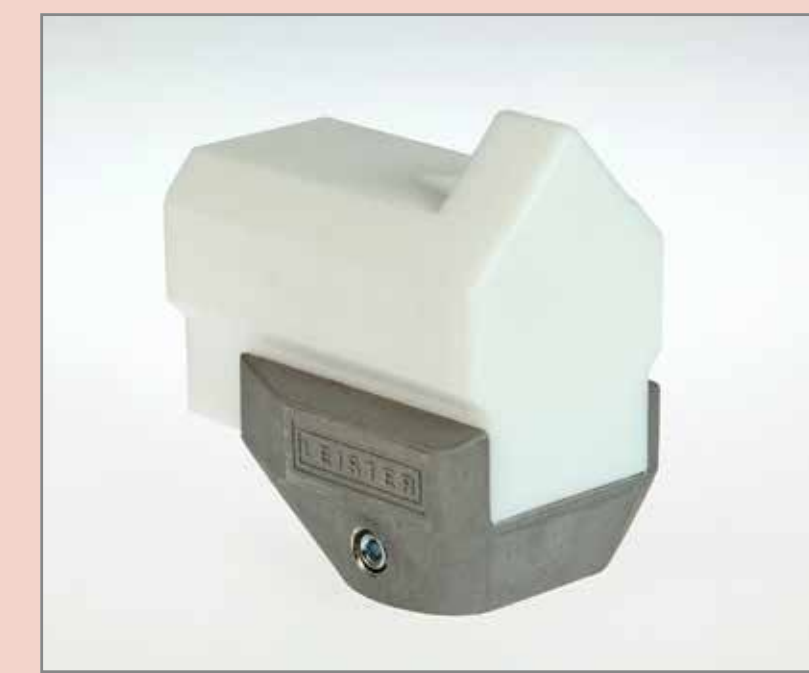
**K-8/10 EA**  
Fillet weld, 8/10 mm  
Article No.: 146.236



**K-12 EA**  
Fillet weld, 12 mm  
Article No.: 146.525



**K-15 EA**  
Fillet weld, 15 mm  
Article No.: 146.231



**K-20 EA**  
Fillet weld, 20 mm  
Article No.: 146.232



**K-25 EA**  
Fillet weld, 25 mm  
Article No.: 146.233



**K-30 EA**  
Fillet weld, 30 mm  
Article No.: 146.234



**V-5/6 EA**  
V-seam, 5/6 mm  
Article No.: 146.248



**V-8/10 EA**  
V-seam, 8/10 mm  
Article No.: 146.249



**V-12 EA**  
V-seam, 12 mm  
Article No.: 146.243



**V-15 EA**  
V-seam, 15 mm  
Article No.: 146.244



**UBL-25 EA**  
Overlap seam, 25 mm  
Article No.: 146.241



**UBL-35 EA**  
Overlap seam, 35 mm  
Article No.: 146.242



**UBL-40 EA**  
Overlap seam, 40 mm  
Article No.: 145.899



**V-20 EA**  
V-seam, 20 mm  
Article No.: 146.245



**V-25 EA**  
V-seam, 25 mm  
Article No.: 146.246



**V-30 EA**  
V-seam, 30 mm  
Article No.: 146.247



**CO-8 EA**  
Corner outside, 8 mm  
Article No.: 146.642



**CO-10 EA**  
Corner outside, 10 mm  
Article No.: 146.644



**CO-12 EA**  
Corner outside, 12 mm  
Article No.: 146.646



**CO-15 EA**  
Corner outside, 15 mm  
Article No.: 146.652



**CL-14 EA**  
Corner seam, Ø 14 mm  
Article No.: 146.230



**CS-20 EA**  
Corner seam, Ø 20 mm  
Article No.: 146.218



**45° Angled adapter S4 / S6**  
WP S4 Article No.: 144.904  
WP S6 Article No.: 144.905



**90° Angled adapter S4 / S6**  
WP S4 Article No.: 145.704  
WP S6 Article No.: 145.705



**Insulation sleeve for S2/S4/S6**  
Article-No.:  
154.002/149.723/149.744



**Welding rod de-reeler for 1 reel**  
Article No.: 144.095



**Pre-heat reflector**  
Article No.: 136.231